

# IDrive<sup>®</sup> One

Three great features in One device



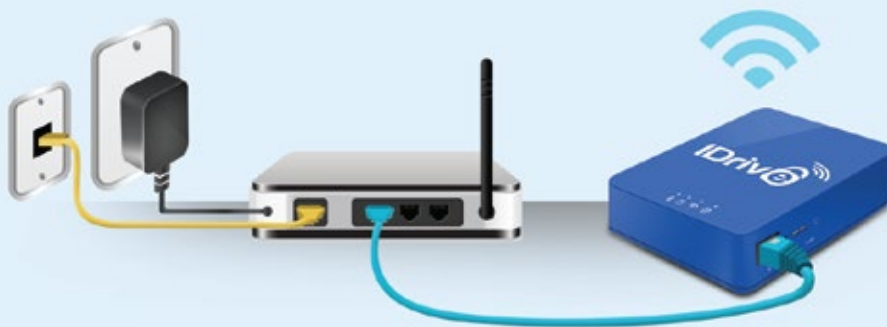
Quick Start Guide

## Setting up Your IDrive One Device as a Wireless Base

To utilize IDrive One as a Wi-Fi extender, the device must be set up in a pass-through mode, so that you can connect to the IDrive One device as well as the internet.

**There are two different ways to set up internet access from IDrive One.**

### Method 1: Using a LAN-based internet connection



1. Plug in the AC adapter to an available electronic outlet. Connect the IDrive One device to a router using a LAN cable.
2. Press and release the power button, and the light above the Wi-Fi symbol will glow after a few seconds.
3. From the device you wish to backup, connect to IDrive One's Wi-Fi network, IDriveOne-XXXX. The default password is 11111111.

## Method 2: Using a Wi-Fi connection

1. Plug in the AC adapter to an available electrical outlet. Press and release the power button, and the light above the Wi-Fi symbol will glow after a few seconds.
2. Connect to IDrive One's Wi-Fi network, IDriveOne-XXXX using the default password 11111111.
3. Open a web browser, and visit 10.10.10.254.
4. Click or tap the **Login** button. The default username is 'admin.' No password is required, but we recommend establishing one after logging in.
5. Go to **Settings>Network>Internet**.
6. From the available network names, select the wireless network that provides your internet access. Enter your network password if required.
7. Click or tap **Save** button and close the window.

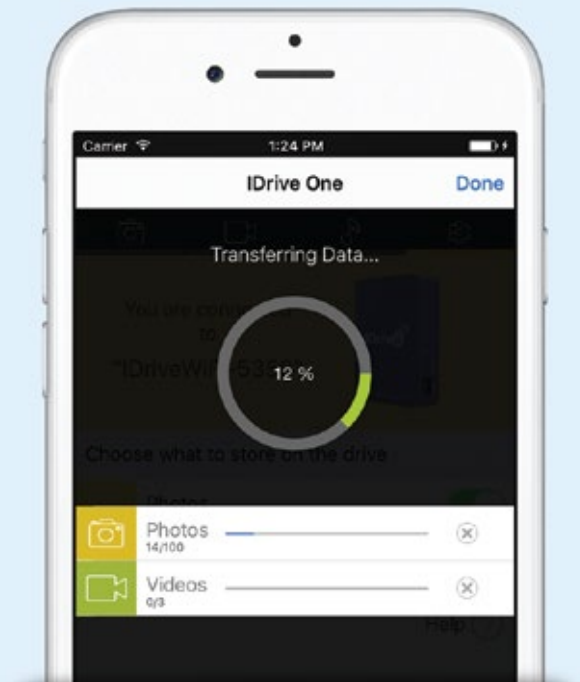


We highly recommend changing your IDrive One Wi-Fi Network Password, and the password for the Administrative Controls. See our FAQ at [idrive.com](http://idrive.com) for details!

## Extending Your Mobile Storage using IDrive One

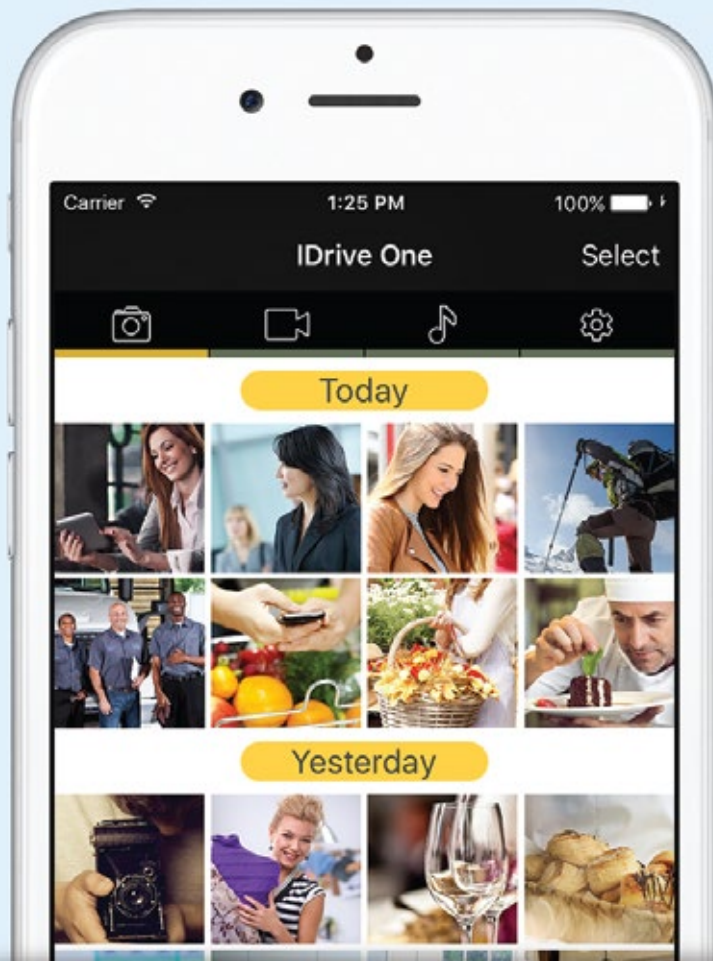
### Loading Data onto the IDrive One Device

1. Visit the App Store or Google Play and download the 'IDrive One' mobile app.
2. Connect your device to the IDrive One Wi-Fi network. If a login field appears, the default username is 'admin.' No password is required, but we recommend establishing one after logging in.
3. Launch the IDrive One mobile app. You should see your IDrive One device and network name.
4. Select the types of files you'd like to load onto the IDrive One device. Once loaded, you can stream Photos, Videos, and Music. (Music available on Android only).
5. Wait for your data to load onto the IDrive One device.



We highly recommend changing your IDrive One Wi-Fi Network Password, and the password for the Administrative Controls. See our FAQ at [idrive.com](http://idrive.com) for details'.

## Streaming Data from the IDrive One Device




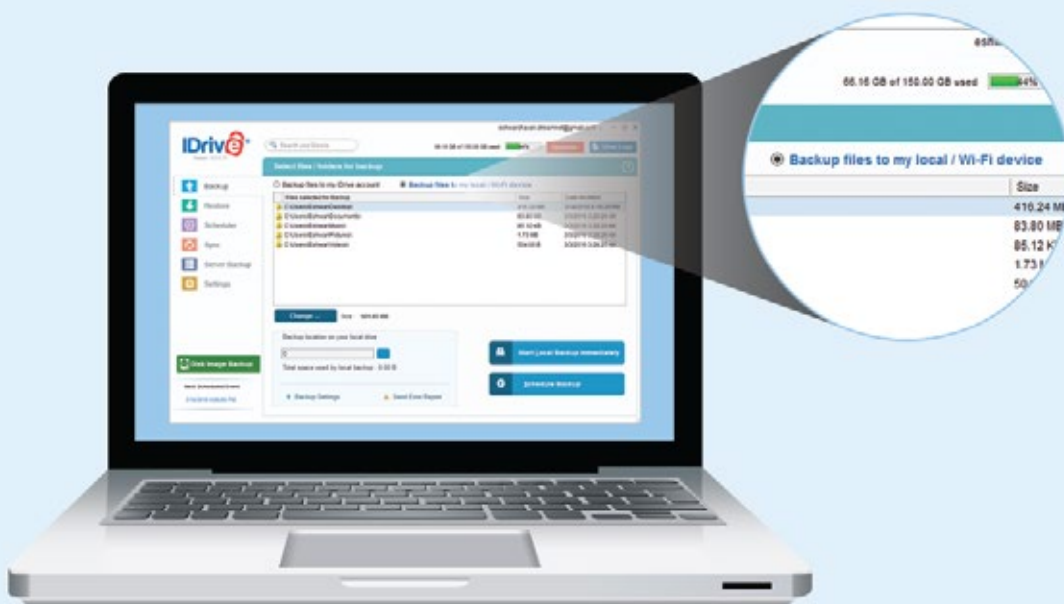
1. Launch the IDrive One mobile app. Make sure you're connected to your IDrive One network.
2. Swipe left to view Pictures, Videos, and Music. (Music available on Android only).

## Using the IDrive Application for Local Backup

### On Desktop

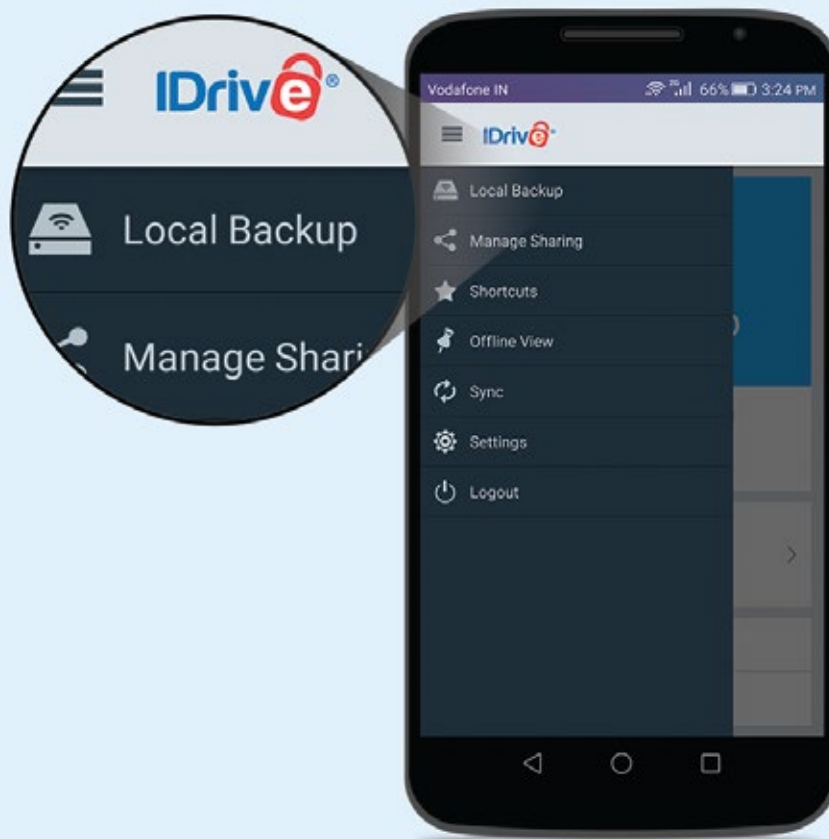
To perform local wireless backups from the IDrive One device, you'll need to connect to the internet.

1. Connect to your IDrive One network, launch the IDrive application and log in.
2. Select the **Backup files to my local/Wi-Fi device** button.
3. Click the  icon in the **Backup location on your local drive** section, then select the IDrive One Wi-Fi network and click **OK**.



4. Enter your login credentials for the IDrive One device. The default username is 'admin.' By default, there is no password.
5. Click **Change...** and select the files/folders you'd like to backup.
6. Click **Schedule Backup** to set a preferred time for running your backup, or click **Start Local Backup Immediately**.

## On Mobile



1. Connect to IDrive One network, launch the IDrive app and log in.
2. Tap **Menu** icon on the top left corner of the screen, then tap the **Backup** button under **Local Backup**.
3. Tap the type of files you'd like to backup.
4. Click **Backup Now** to start your backup.



## Using IDrive One with a USB connection

1. Make sure your IDrive One device is powered off.
2. Connect your IDrive One to a computer with a USB cable.
3. Press and hold the power button to turn on IDrive One.
4. Your IDrive One device will appear as a drive/volume on your computer.

**Note:** IDrive One's Wi-Fi mode cannot be used when the device is connected via USB.

## Specifications

**Wi-Fi Standard:** 802.11 ac/a/b/g/n

**Frequency:** 5 GHz and 2.4 GHz

**Speed:** Up to 1.3 Gbps

**Network Interface:** Up to 100 Mbps Ethernet RJ45

**USB Interface:** Micro USB 3.0 for data transfer

**Operation Temperature:** 5°C - 35°C

**Storage Capacity:** 1 TB HDD, 2 TB HDD, 128 GB SSD and 256 GB SSD

For more details:  
[www.idrive.com/one](http://www.idrive.com/one)



More Questions? Call our Support Team at

**1-855-815-8706, ext: 1**

6 am - 6 pm Pacific, Mon-Fri

[support@idrive.com](mailto:support@idrive.com)

[www.idrive.com/one](http://www.idrive.com/one)